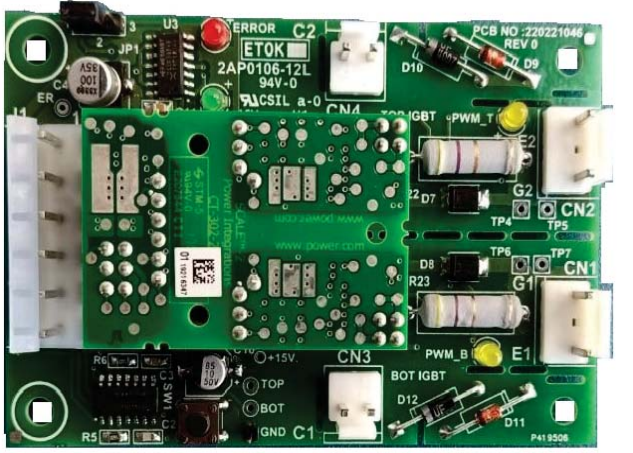


MICRO-MSTB-LATCH

IGBT DRIVER

Excellent Plug & Play solution!!

PART CODE: 220221046



Features

- 1W Compact Dual channel driver
- Switching frequency up to 50 KHz
- $\pm 6A$ gate current, +15V/-10V
- Drive up to 1200V IGBT Module
- Electrical Interface
- Fiber Optical also available
- Integrated short-circuit soft shutdown
- Gate clamping
- Less than 1 μs delay time
- No aging effect due to ASIC
- Primary/Sec. under voltage lockout
- Vce monitoring for short circuit current
- Superior EMI-EMC
- LED indication for Pulse Output
- Error latching function available

Benefits

- On board isolated DC-DC converter - No need of separate SMPS.
- Interface for 3.3V...15 V logic level - Direct compatible with any Controller.
- Common fault feedback signal to interface with controller - Avoid Extra component.
- Field configurable blocking time - Flexibility in your hand, use any make IGBT !!
- Safe isolation to IEC 61800-5-1, IEC-60664-1 & En50178, protection class II
- User Selectable Rg

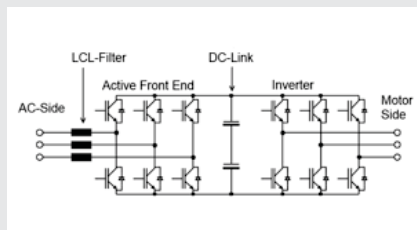
Application



BALLAST



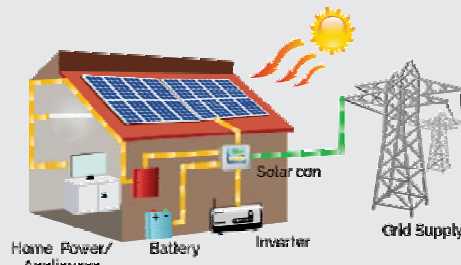
Industrial Drives & Control DRIVES



CONVERTER - INVERTER



UPS



Home Power/ Appliances Battery Inverter SOLAR INVERTER



MEDICAL-X RAY

Recommended Operating condition

Power Supply & Monitoring	MIN	TYP	MAX
1. Supply Voltage Vcc to GND	: 14.5	15	16 V
2. Supply Current Icc (Without Load)	: 80 mA (@49KHz PWM I/P)		
3. Under Voltage Primary, Set Fault	: 11.3	12.0	12.7 V
Clear Fault	: 11.9	12.6	13.3 V
Secondary, Set Fault	: 11.5	12.0	12.5 V
Clear Fault	: 12.1	12.6	13.1 V

Logical Inputs & Outputs

1. Input Bias Current	: 190 μ A
2. Interface Logic level	: 3.3 V 15.0 V logic level
3. Turn-on threshold	: 2.6 V
4. Turn off threshold	: 1.3 V
5. SOx output, failure Condition	: 0.7 V Max., I(SOx) < 20 mA total

Short-Circuit Protection

	: Diode sense method
1. Vce-monitoring threshold	: 9.3 V (Internally Fix)
Trip adjustment D10,D12	: 1N4734A / UF4007 / MUR1100
2. Factory Set response time	: 4.5 μ Sec (C5,C6: 150pF)
3. Minimum response time	: 4.5 μ Sec
4. Available blocking time (R7)	: 49 mSec (User Selectable 100K)
5. Minimum blocking time (R7)	: 9 μ Sec (0E)

Timing Characteristic (Input to Output of Driver board under No-Load)

1. Turn-on delay $t_{d(on)}$: 1 μ S, Max.
2. Turn-off delay $t_{d(off)}$: 1.2 μ S, Max.

For detail timing information of driver core, refer part specific datasheet.

Protection Available on driver board

1. Primary/Secondary Under voltage monitoring & error feedback.
2. Power supply reverse polarity.
3. Soft Shut down, For IGBT Over Voltage.
4. Vce monitoring for short circuit current.
5. Schmitt trigger at the Input stage, highly susceptible to noise.
6. IGBT Gate clamping.

Electrical Isolation

Test voltage (50 Hz/1 sec)	
1. Primary to secondary side	: 4.0 KV
2. Secondary to secondary side	: 4.0 KV

This gate driver is suited for HiPot testing. Nevertheless, it is strongly recommended to limit the testing time to 1s slots. Excessive HiPot testing at voltages much higher than 850V_{AC(eff)} may lead to insulation degradation. No degradation has been observed over 1 min. testing at 2500V_{AC(eff)}. Each driver core production sample shipped has undergone 100% testing at the given value or higher for 1s.

Output Voltage / Current / Power

1. Turn-on voltage, V _{Gth}	: 15.0 V, any load condition
2. Turn-off voltage, V _{GLx}	: -9.9 V, No load
3. Turn-off voltage, V _{GLx}	: -8.0 V @ 1W
4. Gate Peak Current I _{out}	: \pm 6 Amp
5. Internal Gate resistance	: 0.5 Ω
6. External Gate resistance	: Minimum 2.5 Ω , < 25kHz : Minimum 5 Ω , > 25kHz
7. Switching frequency F	: 50 KHz
8. Output Power	: 1.0 W, T _{amb} < 85 °C : 1.2 W, T _{amb} < 70 °C : 0.35W, T _{amb} < 105 °C

Part used on Plug & play driver : 2SC0106T2A1-12 from Power Integration

Environmental

Working temperature	: -40 to 105 °C
Storage temperature	: -40 to 90 °C

Driving Capability : ANY MAKE

All usual 34mm /62mm IGBT modules up to 600 A /1200 V or 600A/600V. Driving power depends on switching frequency so in case of any doubt during selection process pl. contact us.

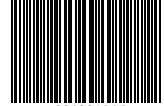
Interfacing with Control Circuit

1. Electrical output to interface with controller, ERROR : Low to High / High to Low (Site selectable)
2. Electrical input from controller, RESET: High to Low signal

LED Indication

Power ON: Green (Normally ON, Off during Power supply fault)
ERROR : RED (ON during Under Voltage / DESAT/ IGBT Fault)
Pulse Output : Yellow (On during Pulse available)

ORDERING CODE - 220221046

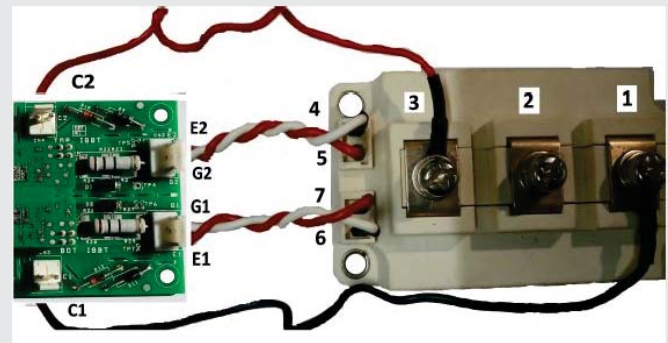
MICRO MSTB LATCH	Description	Specify X from Table
	1W, 6A, 50KHz 1200V CLASS IGBT DRIVER	
	6-PIN MSTB Electrical Interface	
		Default Gate Resistor: 4E7

Interfacing with Control Circuit

6-PIN Input MSTB Pin Detail(J1):

1	ERROR	5	GROUND
2	EXTERNAL RESET	6	+15V SUPPLY
3	PWM INB		
4	PWM INA		

Driver Secondary Connection with IGBT:-



MECHANICAL DIMENSION:

